

2021 by the numbers

Thank you for supporting our services



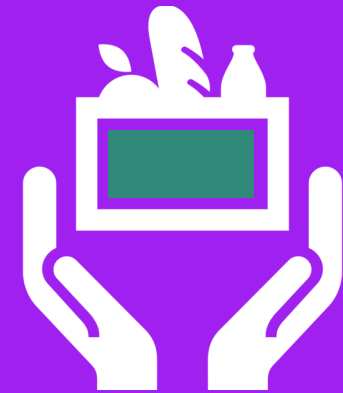
2,400

Food packages distributed
(Nutraceutix Food Mobile
Pantry of Shelby County)



1,892

Volunteer hours served
(Across all programs)



\$35,000

Donations Raised
(Fundraisers and Gifts)



2,400

Citizens served
(Across all programs)

Programming Statistics



1

**Food Package includes
an average of 5 meals**



5

**Meals distributed to
2,400 citizens**



12,000

**Meals distributed
in 1,892 hours**



6.3

**Meals distributed per
citizen**